



**3.5" SATA to USB 3.0 &  
eSATA External Enclosure**

**RDEE-11001**

**User Manual**

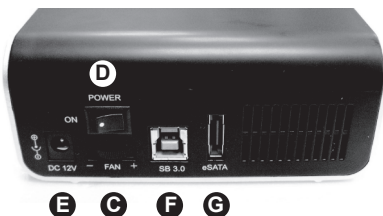


## Enclosure Figure Description

Front View



Rear View

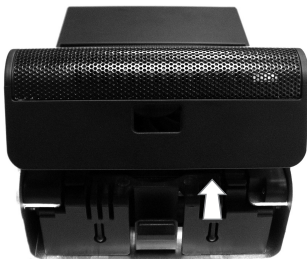


- |                             |                      |
|-----------------------------|----------------------|
| <b>A</b> Ventilation design | <b>E</b> Power Jack  |
| <b>B</b> Cover Buckle       | <b>F</b> USB3.0 Port |
| <b>C</b> Fan Control Knob   | <b>G</b> eSATA Port  |
| <b>D</b> Power Switch       |                      |

### Hard Drive Installation Guide

Note: Please follow the instructions to make sure your Hard Drive is properly installed into the External Enclosure

**STEP1** Push the cover "Buckle" inwardly to lift plastic cover up.



**STEP2** Pull out the HDD plastic tray.



**STEP3** Place 3.5" SATA HDD into the plastic tray and screw the HDD on it.





- STEP4** Slide the HDD into the case and push HDD inwardly until SATA connector well connected.



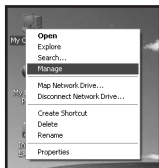
- STEP5** Close the top cover until the buckle is locked.



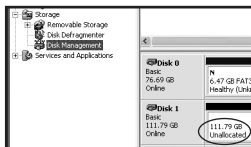
## Hard Drive Formatting Guide

- \* You may format your Hard Drive by using the USB connection.
- \* Please make sure your External Enclosure is turned on and connected to the PC before formatting the Hard Drive.

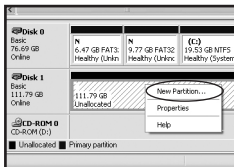
**STEP1** Right-click "My Computer" and select "Manage".



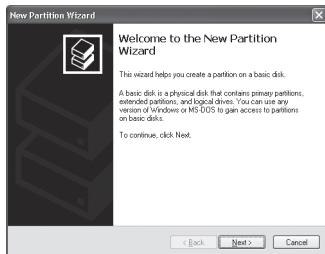
**STEP2** Select "Disk Management" and you will see your Hard Drive shown as "Unallocated" (Disk number may vary)



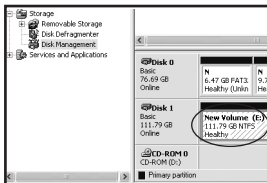
**STEP3** Right-click on the "Unallocated" box and select "New Partition". (Disk number may vary)



- STEP4** The "New Partition Wizard" will appear. Please follow the "New Partition Wizard" step by step to complete the Hard Drive formatting procedure.

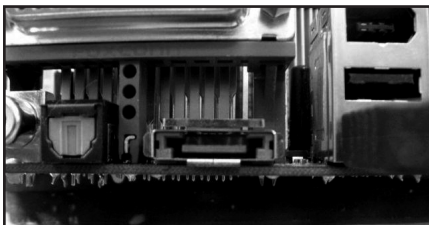


- STEP5** Once the Hard Drive formatting procedure is completed, the Hard Drive will be recognized as a "New Volume" (New Volume drive letter may vary i.e. "New Volume (Z:)" )



- STEP6** Double-click "My Computer". You will see "New Volume" appear on your PC (Drive letter may vary i.e. "New Volume (Z:)" )



**NOTICE****Question :**

Does this SATA enclosure support hot swap?

**Answer :**

Yes, but it depends on the motherboard you have.

1.

If your motherboard has an eSATA port in the Back I/O Connectors Panel as shown in picture # 1 . Your hot-swap function is supported and there is no need to install the eSATA bracket. All you need is connecting the enclosure with eSATA port at the back of your computer. You can connect/disconnect the enclosure with your computer at anytime.

2.

If your motherboard only comes with an onboard SATA port and no eSATA port available. This mean hot-swap is not supported by your motherboard. You will need to install an eSATA bracket. Since hot-swap is not supported, you must connect the enclosure with the computer while it powered off. The computer will recognize the enclosure during the booting sequences and you should be able to see the drive after MS Windows boot up.

**Thank you for purchasing a High-Quality Rosewill Product.**

Please register your product at : **[www.rosewill.com](http://www.rosewill.com)** for complete warranty information and future support for your product.

If you have any question while using our products, please visit our website :  
**[www.rosewill.com](http://www.rosewill.com)**

*Rosewill*<sup>®</sup>

[www.rosewill.com](http://www.rosewill.com)

---